

ZEITQUARTIER EXPOSÉ

Cosy Apartment for business or family



This attractive apartment offers comfort and great furnishings for up to three people. A large double bed is available in the large bedroom, and a second, smaller bedroom offers a comfortable single bed. In the modern living room, the dining area and the TV corner with a large flatscreen TV and couch create a cosy home. The apartment is furnished in a modern, yet comfortable style. Both business travellers and families will feel comfortable during a longer stay.

Location and area

The apartment is located in an apartment building in the heart of the old town of Essen-Steele. Shops, stores and restaurants are within walking distance. The A40 motorway is only around 2.5 km away. The connection to public transport is also very good. The Steele S-Bahn station is just a 10-minute walk away. From there you can ride to Essen main train station in just a few minutes. It takes about 15 minutes to get to the city centre by car. The 166 bus stops in the immediate vicinity of the property.

General

- 2 bedrooms
- 2nd floor
- Internet
- Kitchen with kitchen unit
- Living room
- Non-smoking
- Pets on request
- Public parking
- TV

Kitchen unit

- Ceramic stove with 4 hobs
- Complete kitchenware
- Dishwasher
- Filter coffee machine
- Freezer
- Oven
- Refrigerator
- Toaster
- Water heater

Enquiry

Telefon: +49 (0) 201 1789688

Telefax: +49 (0) 201 1789687

info@zeitquartier.de

www.zeitquartier.de

Property number

E-164.52

Location

45276 Essen

Prize

from 1,490 € per Month

Number of guests

3

Bedroom

2

Size

65 qm

Number of rooms

3

Booking period

from 1 month

ZEITQUARTIER EXPOSÉ

Living and sleeping

- Bedroom 1 with double bed
- Bedroom 2 with single bed
- Living room with sofa, dining table and TV

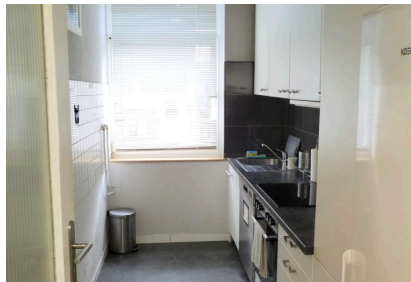
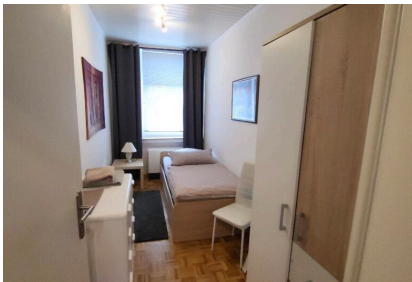
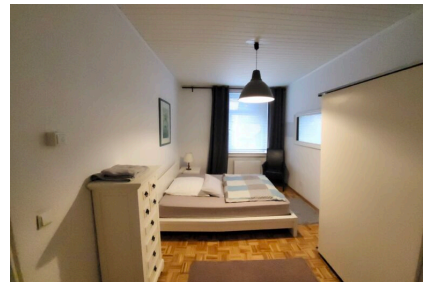
Service

- Bed linen and towels
- Clothes horse
- Dryer in the house
- Final cleaning for fee
- Iron
- Ironing board
- Washing machine in the house

Possible on enquiry

- Baby bed
- High chair
- Extra bed
- Personal mailboxes

More images



ZEITQUARTIER EXPOSÉ

